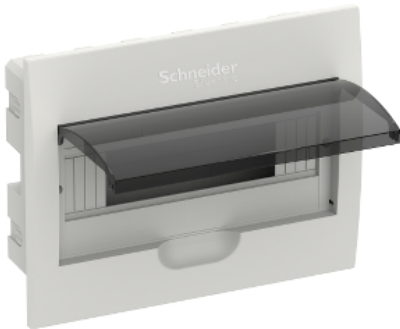


Product datasheet

Specifications



Domae MCB - empty enclosure - 12 modules

DOMH12112F

Main

| | |
|--------------------|-----------|
| Range of product | Domae |
| Product type | Enclosure |
| Enclosure mounting | Flush |

Complementary

| | |
|--------|--------|
| Height | 222 mm |
| Width | 280 mm |
| Depth | 92 mm |

Environment

| | |
|-------------------------|------------------------------|
| Standards | EN 60439-3 |
| IP degree of protection | IP40 conforming to IEC 60529 |

Packing Units

| | |
|------------------------------|---------|
| Unit Type of Package 1 | PCE |
| Number of Units in Package 1 | 1 |
| Package 1 Weight | 812.0 g |
| Package 1 Height | 9.2 cm |
| Package 1 Width | 22.2 cm |
| Package 1 Length | 28.0 cm |

Offer Sustainability

| | |
|-------------------|--|
| EU RoHS Directive | Not applicable, out of EU RoHS legal scope |
|-------------------|--|

Contractual warranty

| | |
|----------|-----------|
| Warranty | 12 months |
|----------|-----------|

Recommended replacement(s)